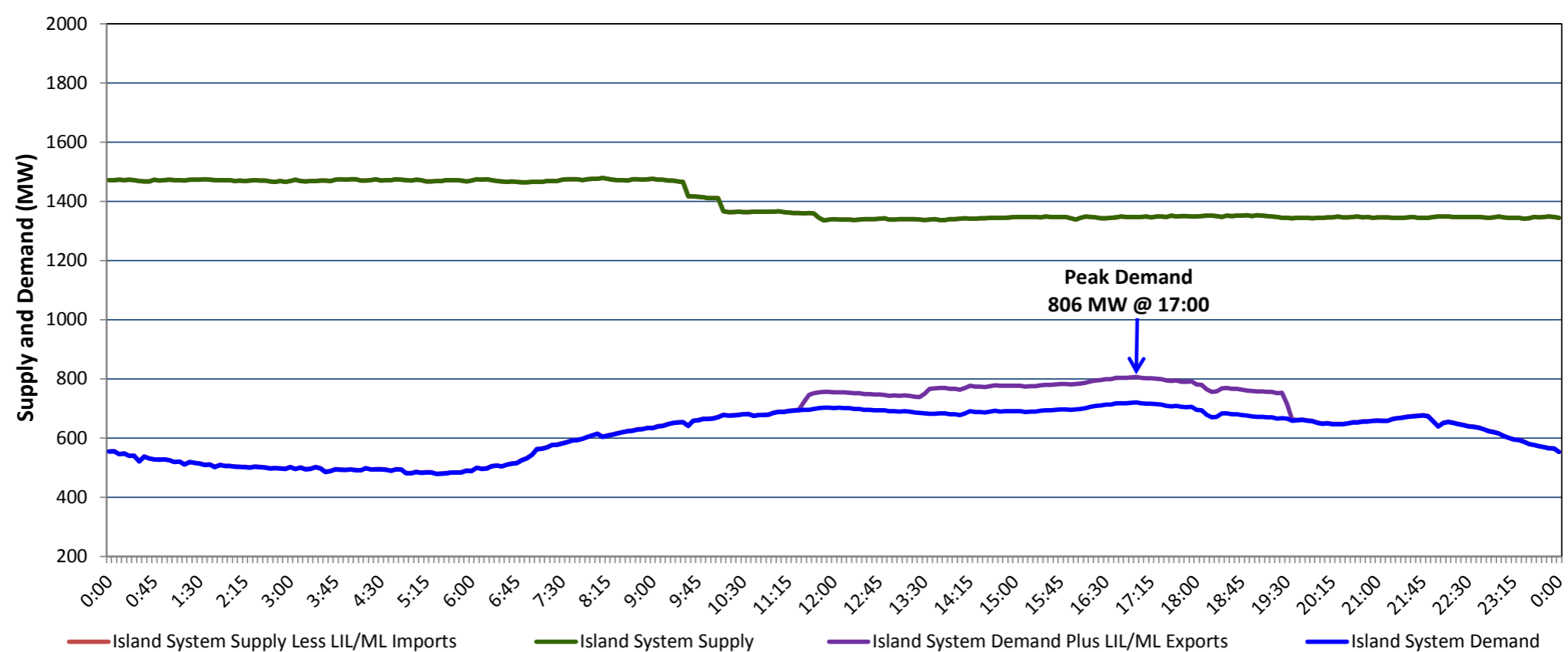


**Newfoundland Labrador Hydro (NLH)
Supply and Demand Status Report Filed Wednesday, July 22, 2020**

**Section 1
Island Interconnected System Supply, Demand & Exports
Actual 24 Hour System Performance For Tuesday, July 21, 2020**



Supply Notes For July 21, 2020

1,2

- A As of 1415 hours, June 11, 2020, Holyrood Unit 1 unavailable due to planned outage (170 MW).
- B As of 0853 hours, June 21, 2020, Holyrood Unit 3 available but not operating (150 MW).
- C As of 1356 hours, July 05, 2020, Granite Canal Unit unavailable due to planned outage 36 MW (40 MW).
- D As of 1000 hours, July 06, 2020, St. Anthony Diesel Plant available at 7.7 MW (9.7 MW).
- E As of 0808 hours, July 15, 2020, Holyrood Unit 2 unavailable due to planned outage (170 MW).
- F At 0932 hours, July 21, 2020, Stephenville Gas Turbine unavailable due to planned outage (50 MW).
- G At 1006 hours, July 21, 2020, Bay d'Espoir Unit 4 unavailable due to planned outage 45 MW (76.5 MW).
- H At 1530 hours, July 21, 2020, Stephenville Gas Turbine available (50 MW).

**Section 2
Island Interconnected Supply and Demand**

Wed, Jul 22, 2020	Island System Outlook ³	Seven-Day Forecast	Temperature (°C)		Island System Daily Peak Demand (MW)	
			Morning	Evening	Forecast	Adjusted ⁷
Available Island System Supply: ⁵	1,395 MW	Wednesday, July 22, 2020	19	20	735	735
NLH Island Generation: ⁴	1,085 MW	Thursday, July 23, 2020	17	19	740	740
NLH Island Power Purchases: ⁶	100 MW	Friday, July 24, 2020	14	13	735	735
Other Island Generation:	210 MW	Saturday, July 25, 2020	14	14	695	695
ML/LIL Imports:	- MW	Sunday, July 26, 2020	17	16	700	700
Current St. John's Temperature & Windchill:	16 °C	Monday, July 27, 2020	16	15	740	740
7-Day Island Peak Demand Forecast:	745 MW	Tuesday, July 28, 2020	13	16	745	745

Supply Notes For July 22, 2020

3

- Notes:
1. Generation outages for running and corrective maintenance are included. These are not unusual for power system operations. They generally do not impact customer supply. The power system operators schedule outages to system equipment whenever possible to coincide with periods when customer demands are low and sufficient supply reserves are available. However, from time to time equipment outages are necessary and reserves may be impacted.
 2. Due to the Island system having no synchronous connections to the larger North American grid, when there is a sudden loss of large generating units there may be a requirement for some customer's load to be interrupted for short periods to bring generation output equal to customer demand. This automatic action of power system protection, referred to as under frequency load shedding (UFLS), is necessary to ensure the integrity and reliability of system equipment. Under frequency events have typically occurred 5 to 8 times per year on the Island Interconnected System and the resultant customer load interruptions are generally less than 30 minutes. With the activation of the Maritime Link frequency controller during the winter of 2018, UFLS events have occurred less frequently.
 3. As of 0800 Hours.
 4. Gross output including station service at Holyrood (24.5 MW) and improved NLH hydraulic output due to water levels (35 MW).
 5. Gross output from all Island sources (including Note 4).
 6. NLH Island Power Purchases include: CBPP Co-Gen, Nalcor Exploits, Rattle Brook, Star Lake, Wind Generation and capacity assistance (when applicable).
 7. Adjusted for curtailable load, market activities and the impact of voltage reduction when applicable.

**Section 3
Island Peak Demand Information
Previous Day Actual Peak and Current Day Forecast Peak**

Tue, Jul 21, 2020	Actual Island Peak Demand ⁸	17:00	806 MW
Wed, Jul 22, 2020	Forecast Island Peak Demand		735 MW

Notes: 8. Island Demand / LIL / ML Exports (where applicable) is supplied by NLH generation and purchases, plus generation owned and operated by Newfoundland Power and Corner Brook Pulp & Paper (Deer Lake Power, DLP).